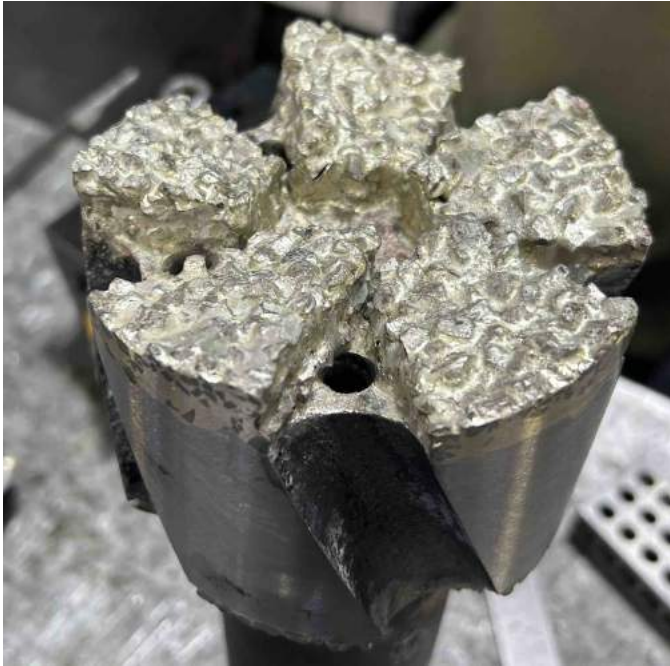


## SJ Mills

### SJ "Junk Mills"

As with all of our thru-tubing mills our SJ series can be custom fabricated to suit your application.

SJ-FB (Flat Bottom) are usually built with 5 sections of WC Chips to your desired thickness and desired chip size or type.



Options shown above are open center / blade-set reverse spiral gauge



Options shown above are Extra Thickness of 1/4" Starbide chips set with massive pad shape with a closed center and large chip up drill

